

PHASE 1 GENERAL

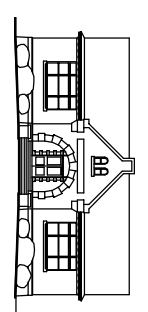
- REMOVE ALL EXTERIOR STORM SASH.
- REMOVE ALL EXISTING WINDOWS AT ARSE - THIS FLOOR ONLY. ALL OTHER WINDOWS REMAIN. EXTERIOR DOOR TO REMAIN.

PHASE 2 GENERAL

- REMOVE ALL CONSTRUCTION SHOWN DOTTED - SHORE WHERE STRUCTURAL MEMBERS ARE REMOVED. (POSE WINDOWS ALREADY REMOVED IN PHASE 1).
- REMOVE ALL EXISTING SHELVING, WALL, CEILING AND FLOOR FINISHES BACK TO ORIGINAL CONSTRUCTION.
- REMOVE EXTERIOR DOOR.
- REMOVE ALL EXISTING UTILITIES - PLUMBING, HEATING, ELECTRICAL SYSTEMS.
- REMOVE EXISTING SLAB, EXCAVATE FOR NEW LOWER SLAB.

PHASE 3 GENERAL

- NO WORK.



Boylston Public Library

Boylston, Massachusetts

Lower Level - Demolition Plan